



Patterns from Don Halstead

B A B Y S Q U A R E S C A P

DESCRIPTION

This pattern creates a banded cap for a newborn to six-month old baby. You can experiment with color alternatives and I created this design with unusual pastel color choices to suit either a baby boy or girl. Substituting materials (for example, wool rather than organic cotton) should be tested for sizing and appearance.

CROCHET PATTERN

Hook Size F, 4 sts, 5 rows = 1", gauged for Pakucho 100% organic cotton.

This color pattern is easily modified, and if you need to increase/decrease the size of the cap, increase/decrease the color pattern by increments of 4 stitches and adjust the color pattern accordingly.

1. Ch 70 STS + turning ST
2. Following color chart, use the Hatternique Crochet Technique of single crochet, and crochet 7 rounds working in base color. (Note: Create the chain and first round out of first-round color of band to give the band and smoother look when folded up.) When crocheting first round, join chain and crochet down into what was your first stitch to even out first round.

See Hatternique tips (www.Hatternique.com) for more information and free directions for the Hatternique Crochet Technique.

3. Follow color pattern for completing Baby Squares motif through Round 12 of cap.

Visit www.Hatternique.com for more great patterns.

© Copyright 2002 Hatternique. Do not distribute without permission.



Patterns from Don Halstead

B A B Y S Q U A R E S C A P *(cont.)*

DECREASING

4. As you start Round 13, which is the last round of the upper sage/green border of the Baby Squares motif, decrease one stitch every 7th stitch.
5. Changing back to base color:
Round 14 = crochet round with no decrease. Round 15 = decrease every 6th stitch. Round 16 = crochet round with no decrease. Round 17 = decrease every 3rd stitch. Round 18 = crochet round with no decrease.
7. Rounds 19 through last round = decrease every other stitch until 6 stitches remain.
8. Leave about a 10" tail as your bind-off finish. Turn Cap inside-out and with a yarn needle use the bind-off tail to close the top hole.

B A N D

1. With the sage/green yarn, crochet into the bottom stitches of the cap, making sure when the band is turned up the right side will be facing out. (Tip: Begin the first stitch of the of the band two or three stitches BEFORE the first stitch of the cap. You may find it helpful to use a yarn needle to make each stitch a bit looser into which you crochet.) As you work your first round, increase one stitch every 9th stitch (should leave you with a total of 78 stitches).
2. Work the pattern from the color chart for the 6 rounds of the band, again, using the Hatternique Crochet Technique for the Baby Squares pattern.
3. As you crochet the last stitch of the last round, crochet two more stitches downward into the back of the cap's band to give a smooth edge.

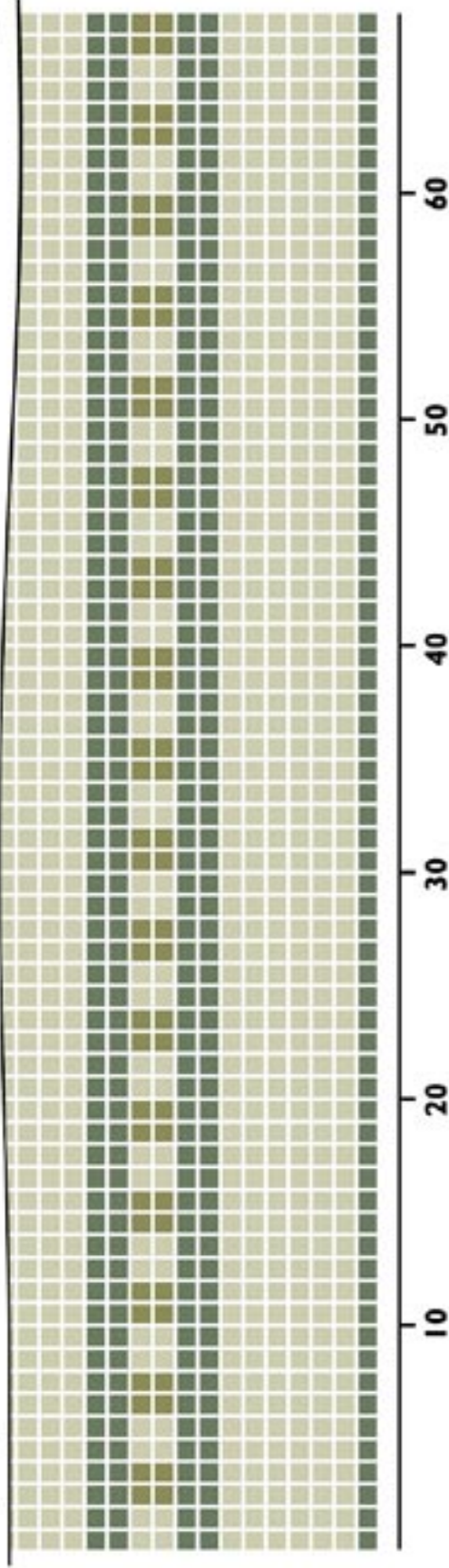
FINISHING

Work in all loose threads on the inside of the cap (and back of the band) using a yarn needle.

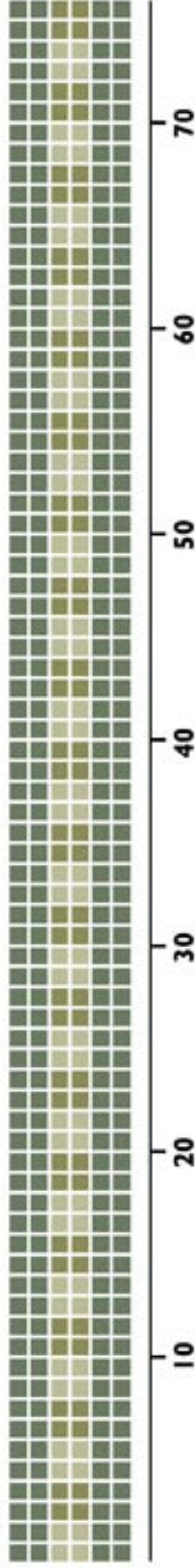
Baby Squares Cap

TOP

Cap



Band



Visit www.Hatternique.com for more great patterns.
© Copyright 2002 Hatternique. Do not distribute without permission.